



**Government of India
Ministry of Earth Sciences
India Meteorological Department**



Press Release

Date: 03rd September, 2025

Time of Issue: 1345 hours IST

**Subject: i) Heavy to very heavy rainfall likely to continue over Western Himalayan Region, Punjab & Haryana on today, the 03rd September, 2025 and decrease significantly thereafter.
ii) Heavy to very Heavy rainfall spell likely to continue over East and Central India for next 2-3 days with isolated Extremely heavy rainfall (≥ 21 cm) over West Madhya Pradesh on 05th September, 2025.
iii) Heavy to very heavy rainfall likely over Konkan & Goa, Madhya Maharashtra and Gujarat State during 03rd-07th September with possibility of Extremely heavy rainfall at isolated places over Gujarat during 04th-06th and Saurashtra & Kutch on 06th September, 2025.**

Realised weather during past 24 hours till 0830 hours IST of today, the 03rd September, 2025:

- ❖ **Heavy to very heavy rainfall with Extremely heavy rainfall (≥ 21 cm)** has been recorded at isolated places over Jammu-Kashmir.
- ❖ **Very heavy rainfall (12-20 cm)** has been recorded at isolated places over Himachal Pradesh, Uttarakhand, Punjab, Haryana, West Uttar Pradesh, West Madhya Pradesh, Odisha and Kerala.
- ❖ **Heavy rainfall (7-11 cm)** has been recorded at isolated places over East Rajasthan, Arunachal Pradesh, Mizoram, Jharkhand, East Madhya Pradesh, Chhattisgarh, Andaman & Nicobar Islands, Konkan & Goa, Madhya Maharashtra, Coastal Karnataka, South Interior Karnataka, Coastal Andhra Pradesh and Telangana.

For more details of realised weather, kindly refer [Annexure I](#).

i. Weather Systems, Forecast and Warnings (refer to [Annexure II & III](#)):

- ❖ The Monsoon trough at mean sea level runs near normal position.
- ❖ Yesterday's low-pressure area over Northwest Bay of Bengal became well marked low pressure area over the same region at 0530 hrs IST, and lay over northwest Bay of Bengal off north Odisha coasts at 0830 hrs IST of today, the 03rd September, 2025. It is likely to move west-northwestwards across north Odisha and adjoining Jharkhand and north Chhattisgarh during next 24 hours.
- ❖ A Western Disturbance seen as a cyclonic circulation over north Pakistan & adjoining Punjab in lower tropospheric levels with a trough aloft in upper tropospheric level runs roughly along Long. 72°E to the north of Lat. 28°N.
- ❖ An upper air cyclonic circulation lies over south Haryana in lower tropospheric levels.

Under the influence of these systems, the following weather is likely:

Northwest India:

- ❖ Isolated **heavy rainfall** likely to continue Uttarakhand during 03rd-09th; Haryana, Chandigarh on 04th & 09th; West Uttar Pradesh on 03rd; West Rajasthan on 05th & 08th; East Rajasthan on 06th September with **isolated very heavy rainfall very likely over Jammu-Kashmir, Himachal Pradesh, Punjab, Haryana, Chandigarh on 03rd; East Rajasthan during 03rd-05th; West Rajasthan on 06th & 07th September.**
- ❖ Light/moderate rainfall at most/many places over the region during next 7 days.

West India:

- ❖ **Extremely heavy rainfall** very likely at isolated places over Gujarat Region during 04th-06th; Saurashtra & Kutch on 06th September.
- ❖ **Isolated heavy rainfall** is very likely over Konkan & Goa, Madhya Maharashtra on 03rd & 07th; Marathwada on 03rd; Gujarat State on 04th September with **very heavy rainfall over Konkan & Goa, Madhya Maharashtra during 04th-06th; Saurashtra & Kutch on 05th & 07th September.**
- ❖ Light to moderate rainfall accompanied with thunderstorm & lightning at a few/many places very likely over the region during next 7 days.

East & Central India:

- ❖ **Extremely heavy rainfall** very likely at isolated places over West Madhya Pradesh on 05th September.
- ❖ **Isolated heavy rainfall** likely over Gangetic West Bengal on 03rd; East Madhya Pradesh on 04th & 05th; Vidarbha, Chhattisgarh & Odisha on 04th; West Madhya Pradesh on 06th; Bihar on 06th & 07th; Sub-Himalayan West Bengal & Sikkim during 07th-09th; Andaman & Nicobar Islands on 07th & 08th September with isolated **very heavy rainfall over West Madhya Pradesh on 03rd & 04th; East Madhya Pradesh, Vidarbha, Chhattisgarh, Jharkhand, Odisha on 03rd September.**
- ❖ Light to moderate rainfall at most/many places accompanied with thunderstorm & lightning likely over the region during next 7 days.

Northeast India:

- ❖ **Isolated heavy rainfall** likely over Assam & Meghalaya during 03rd-08th; Nagaland, Manipur, Mizoram & Tripura during 03rd -07th and Arunachal Pradesh on 03rd & during 07th-09th September.
- ❖ Light/moderate rainfall at many places accompanied with thunderstorm & lightning likely during next 7 days.

South Peninsular India:

- ❖ **Isolated heavy rainfall** likely over Coastal Andhra Pradesh & Yanam, Telangana, Coastal Karnataka on 03rd; Kerala & Mahe on 03rd & 04th September.
- ❖ Light to moderate rainfall accompanied with thunderstorm & lightning at a few places likely over the region during next 7 days.

Fishermen warning:

Fishermen are advised not to venture into the following from 03rd to 08th September 2025 to the following Areas:

Arabian Sea (AS)

Along and off the Somalia, Oman coasts and adjoining sea areas during 03rd to 08th September, most parts of central Arabian Sea, adjoining & many areas of southwest Arabian Sea during 03rd to 06th September; most parts of westcentral Arabian Sea and adjoining areas of southwest Arabian Sea during 06th to 08th September; most parts of eastcentral Arabian Sea for 03rd September, few parts of northwest Arabian sea for 07th September, over Lakshadweep on 03rd to 05th; along and off Gujarat coast during 04th to 08th September; Konkan, Goa coasts during 03rd to 07th September; along and off north Konkan coast on 07th September; along and off Karnataka coast during 03rd to 05th September; along and off Kerala coast during 03rd to 5th September.

Bay of Bengal (BoB):

Along and off Tamil Nadu coast during 03rd to 05th September; Along and off Andhra Pradesh coast during 03rd to 05th September; off Tamil Nadu and Andhra Pradesh coasts on 05th September; along and off Odisha, West Bengal, Bangladesh, Myanmar coasts on 03rd September; most parts of Bay of Bengal on 03rd September; most parts of westcentral, southwest and adjoining southeast Bay of Bengal during 04th to 06th September; many parts of westcentral, southwest and adjoining southeast Bay of Bengal on 06th September, few parts of southwest Bay of Bengal for 07th; over Gulf of Mannar & adjoining Comorin area during 03rd to 08th; over Andaman Sea during 03rd September.

ii. Weather conditions and forecast over Delhi/NCR during 03rd September to 06th September 2025 (Annexure IV)

For more details, kindly refer National Weather Bulletin:

https://mausam.imd.gov.in/responsive/all_india_forecast_bulletin.php

For District wise warnings refer: <https://mausam.imd.gov.in/responsive/districtWiseWarningGIS.php>

For Fishermen warning refer <https://rsmcnewdelhi.imd.gov.in/fishermen-warning.php>

Rainfall recorded (in cm) during past 24 hours till 0830 hours IST of today, the 03rd September:

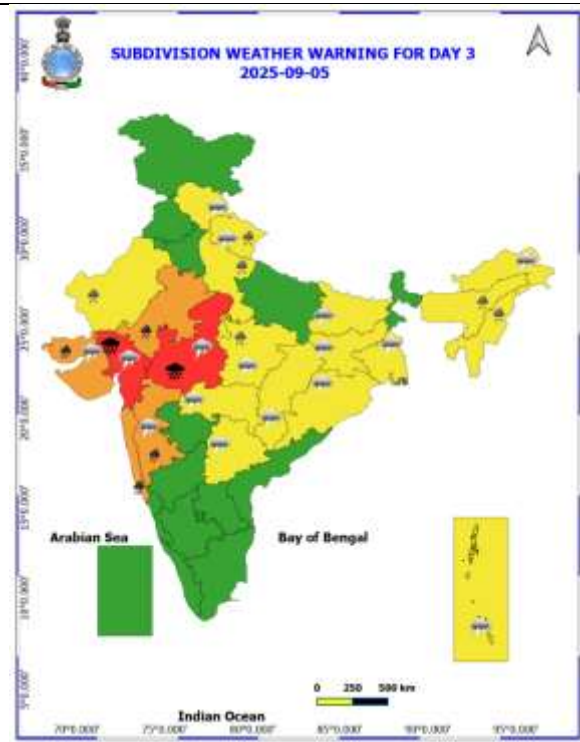
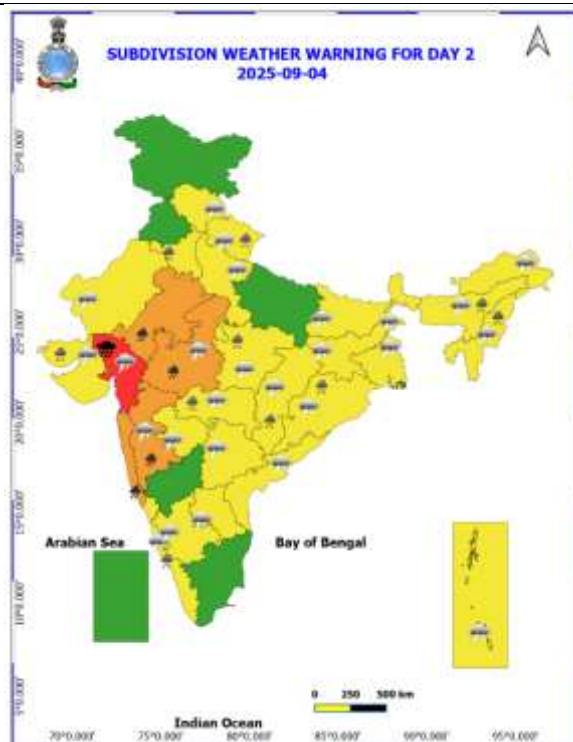
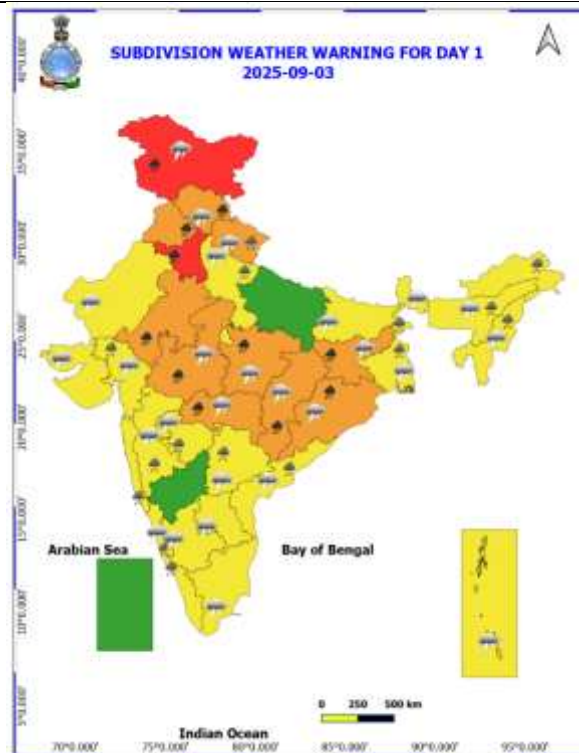
- ❖ **Jammu-Kashmir:** Udhampur(iaf) (dist Udhampur) 30, Reasi Arg (dist Reasi) 23, Reasi Kvk Aws (dist Reasi) 23, Katra (dist Reasi) 21, Batote (dist Ramban) 18, Bhaderwah Arg (dist Doda) 12, Badarwah (dist Doda) 12, Banihal (dist Ramban) 11, Govindpura Aws (dist Ramban) 10, Jammu Aws (dist Jammu) 9, Jammu (dist Jammu) 9, Rajouri (dist Rajouri) 9, Rajouri Arg (dist Rajouri) 8, Jammu Aero (dist Jammu) 8, Kukernag (dist Anantnag) 8, Qazi Gund (dist Kulgam) 8, Larnoo Arg (dist Anantnag) 8, Anantnag (dist Anantnag) 7, Kishtwar (dist Kistwar) 7, Awantipur Iaf (dist Pulwama) 7;
- ❖ **Haryana, Chandigarh:** Ladwa (dist Kurukshetra) 20, Khedijalab Rev (dist Hisar) 17, Babain Rev (dist Kurukshetra) 15, Samalkha (dist Panipat) 11, Bapouli (dist Panipat) 11, Madluda Rev (dist Panipat) 11, Ambala (dist Ambala) 11, Barwala Rev (dist Hisar) 11, Radaur (dist Yamuna Nagar) 10, Barara (dist Ambala) 10, Shahbad (dist Kurukshetra) 10, Ganaur (dist Sonapat) 10, Morni (dist Panchkula) 10, Ambala Cantt (dist Ambala) 10, Thanesar (dist Kurukshetra) 10, Khanpur Rev (dist Sonapat) 9, Indri (dist Karnal) 9, Sadhaura (dist Yamuna Nagar) 9, Sonapat (dist Sonapat) 9, Ambala Rev (dist Ambala) 9, Jansui Had (dist Ambala) 8, Bawal Aws (dist Rewari) 7, Uklana Rly (dist Hisar) 7, Chandigarh Iaf (dist Chandigarh) 7, Rai Rev (dist Sonapat) 7, Ujha Panipat Aws (dist Panipat) 7, Uklana Rev (dist Hisar) 7, Narwana (dist Jind) 7, Raipur Rani (dist Panchkula) 7, Palhawas Rev (dist Rewari) 7, Chandigarh Aws (dist Chandigarh) 7;
- ❖ **Punjab:** Sangrur (dist Sangrur) 14, Sangrur Aws (dist Sangrur) 12, Dhuri (dist Sangrur) 12, Gurdaspur Amfu (dist Gurdaspur) 9, Malerkotla (dist Sangrur) 9, Tibri (dist Gurdaspur) 9, Shahpur Kandi (dist Pathankot) 9, Handiaya Hmo (dist Barnala) 9, Jagraon (dist Ludhiana) 8, Dasuya (dist Hoshiarpur) 7, Dhariwal Irr (dist Gurdaspur) 7, Phangota (dist Pathankot) 7, Sunam (dist Sangrur) 7, Jalandhar (dist Jalandhar) 7, Halwara Iaf (dist Ludhiana) 7;
- ❖ **Uttarakhand:** Khatima (dist Udham Singh Nagar) 14, Banbasa (dist Champawat) 12, Nainital (dist Nainital) 11, Haldwani (dist Nainital) 8, Mussoorie (dist Dehradun) 7;
- ❖ **Himachal Pradesh:** Naina Davi (dist Bilaspur) 14, Jot (dist Chamba) 10, Pachhad (dist Sirmaur) 8, Kothi (dist Kullu) 7, Chamba (dist Chamba) 7;
- ❖ **West Madhya Pradesh:** Sarangpur (dist Rajgarh) 14, Moman Badodiya (dist Shajapur) 11, Badoda (dist Sheopur) 11, Khilchipur (dist Rajgarh) 9, Dolariya (dist Narmadapuram) 8, Rahatgaon (dist Harda) 8, Gulana (dist Shajapur) 8, Khirkiya-arg (dist Harda) 7, Agar (dist Agar-malwa) 7, Harda (dist Harda) 7, Narmadapuram (dist Narmadapuram) 7, Jawar (dist Sehore) 7, Timarni (dist Harda) 7, Goharganj (dist Raisen) 7;
- ❖ **Kerala:** Aralam (dist Cannur) 13, Chemberi (dist Cannur) 12, Ayyankunnu (dist Cannur) 8, Panathur (dist Kasargod) 8;
- ❖ **Odisha:** Patnagarh (dist Bolangir) 13, Bhapur (dist Nayagarh) 7, Lamataput (dist Koraput) 7, Harichandanpur (dist Keonjhar) 7;
- ❖ **West Uttar Pradesh:** Khedda (dist Baghpat) 12, Baraut (dist Baghpat) 11, Meerut Teh (dist Meerut) 9, Baghpat (dist Baghpat) 8;
- ❖ **Coastal Karnataka:** Sulya (dist Dakshina Kannada) 11, Mangaluru Ap Obsy (dist Dakshina Kannada) 10, Manki (dist Uttara Kannada) 8, Mani (dist Dakshina Kannada) 7, Bantwal (dist Dakshina Kannada) 7, Dharmasthala (dist Dakshina Kannada) 7;
- ❖ **East Rajasthan:** Todabhim (dist Karauli) 11, Kathumer (dist Alwar) 10, Khanpur (dist Jhalawar) 9, Khandar Sr (dist Sawai Madhopur) 9, Beir Sr (dist Bharatpur) 9, Karauli (dist Karauli) 8, Pipalda Sr (dist Kota) 7, Pirawa (dist Jhalawar) 7;
- ❖ **Konkan & Goa:** Sangameshwar Devrukh (dist Ratnagiri) 11;
- ❖ **East Madhya Pradesh:** Birsia (dist Balaghat) 11, Dhanora (dist Seoni) 9, Malanjkhanda (dist Balaghat) 8, Shahpura (dist Jabalpur) 7, Seoni (dist Seoni) 7, Paraswada (dist Balaghat) 7, Ghansore (dist Seoni) 7;
- ❖ **South Interior Karnataka:** Agumbe Aws (dist Shivamogga) 10;
- ❖ **Coastal Andhra Pradesh:** Palasa (dist Srikakulam) 9, Mandasa (dist Srikakulam) 7;
- ❖ **Chhattisgarh:** Kusmi (dist Balrampur) 9, Masturi (dist Bilaspur) 9, Takhatpur (dist Bilaspur) 9, Pachpedi (dist Bilaspur) 8, Pendra Road (dist Gaurela Pendra Marwahi) 7, Bade Bacheli (dist Dantewada) 7, Gariabund (dist Gariaband) 7, Bhairamgarh (dist Bijapur) 7, Bodari (dist Bilaspur) 7, Kapu (dist Raigarh) 7, Seepat (dist Bilaspur) 7;
- ❖ **Telangana:** Vicarabad (dist Vikarabad) 7;

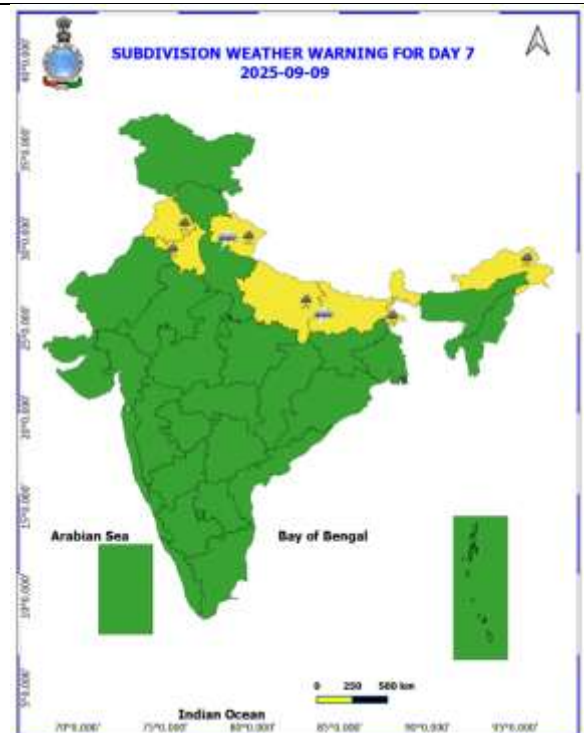
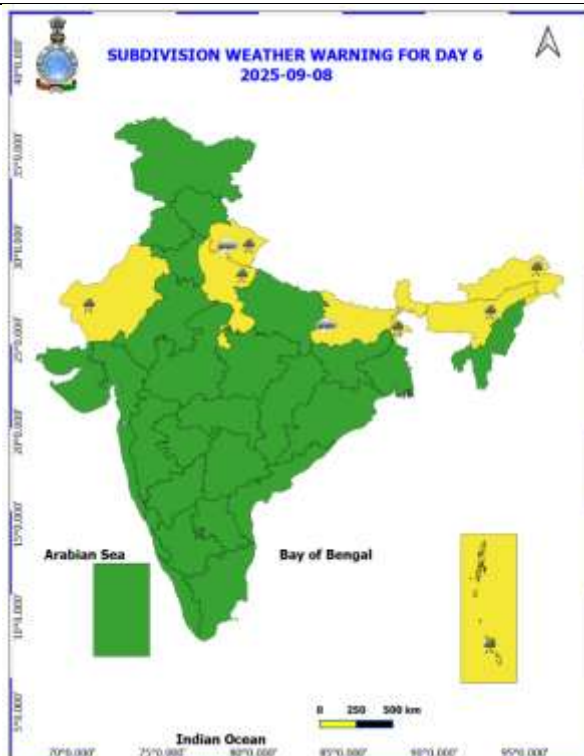
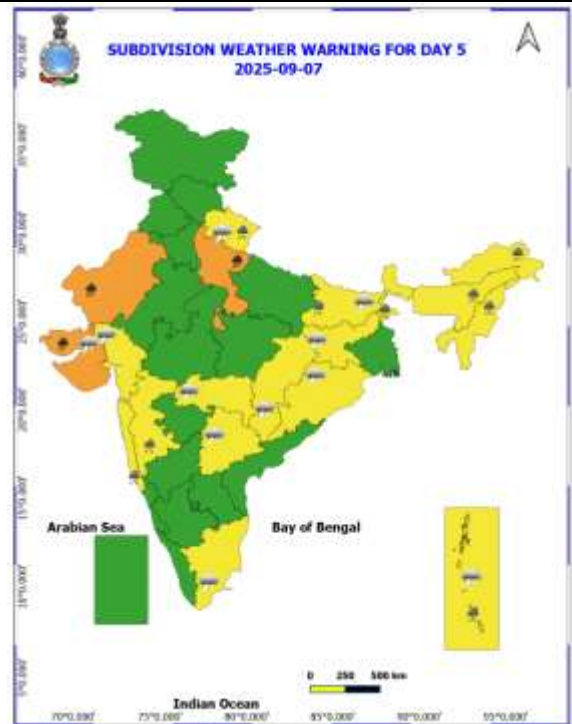
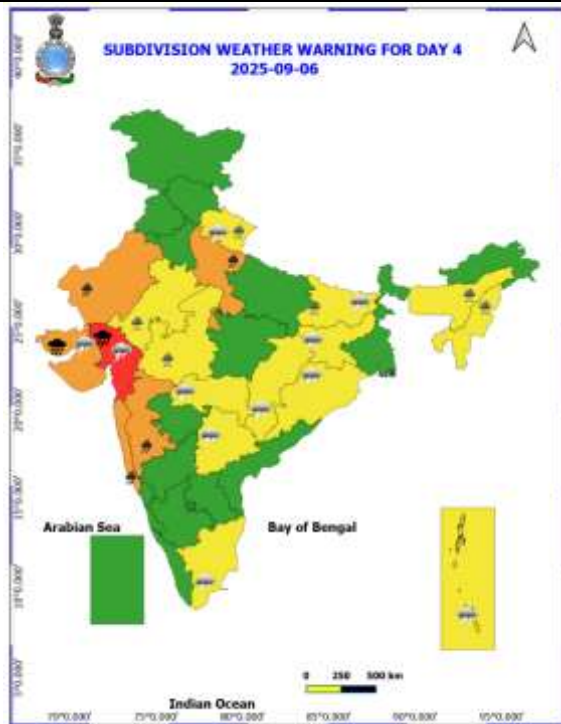
- ❖ **Andaman & Nicobar Islands:** Port Blair (dist South Andaman) 7;
- ❖ **Madhya Maharashtra:** Tamini (Pune) 7;
- ❖ **Jharkhand:** Sonua (dist West Singbhum) 7;
- ❖ **Arunachal Pradesh:** Bomdila_ Aws (dist West Kameng) 7;
- ❖ **Mizoram:** Lengpui (dist Aizawl) 7.

ANNEXURE II

Table-1								
7 Days Rainfall Forecast								
S.No.	Subdivision	3- Sep	4- Sep	5- Sep	6- Sep	7- Sep	8- Sep	9- Sep
		Day 1	Day 2	Day 3	Day 4	Day 5	Day 6	Day 7
1	ANDAMAN & NICOBAR ISLANDS	WS	WS	WS	WS	WS	WS	WS
2	ARUNACHAL PRADESH	SCT	SCT	SCT	SCT	FWS	FWS	FWS
3	ASSAM & MEHGHALAYA	SCT	FWS	FWS	FWS	FWS	FWS	FWS
4	NAGALAND, MANIPUR, MIZORAM AND TRIPURA	FWS	FWS	FWS	FWS	FWS	SCT	SCT
5	SUB HIMALAYAN WEST BENGAL & SIKKIM	FWS	SCT	SCT	SCT	FWS	FWS	FWS
6	GANGETIC WEST BENGAL	WS	FWS	FWS	SCT	SCT	FWS	FWS
7	ODISHA	WS	FWS	SCT	SCT	SCT	SCT	SCT
8	JHARKHAND	WS	FWS	FWS	SCT	SCT	FWS	FWS
9	BIHAR	ISOL	SCT	SCT	SCT	FWS	FWS	SCT
10	EAST UTTAR PRADESH	ISOL	SCT	ISOL	ISOL	ISOL	SCT	FWS
11	WEST UTTAR PRADESH	SCT	SCT	SCT	ISOL	ISOL	ISOL	SCT
12	UTTARAKHAND	FWS	FWS	FWS	FWS	FWS	FWS	FWS
13	HARYANA, CHANDIGARH & DELHI	WS	FWS	SCT	SCT	SCT	FWS	FWS
14	PUNJAB	FWS	SCT	ISOL	ISOL	ISOL	SCT	FWS
15	HIMACHAL PRADESH	WS	SCT	SCT	SCT	SCT	SCT	SCT
16	JAMMU AND KASHMIR AND LADAKH	WS	ISOL	ISOL	ISOL	SCT	SCT	ISOL
17	WEST RAJASTHAN	ISOL	SCT	SCT	FWS	FWS	SCT	ISOL
18	EAST RAJASTHAN	WS	WS	WS	FWS	SCT	SCT	SCT
19	WEST MADHYA PRADESH	WS	WS	WS	FWS	SCT	SCT	SCT
20	EAST MADHYA PRADESH	WS	WS	FWS	FWS	SCT	SCT	SCT
21	GUJRAT REGION	WS	WS	WS	WS	WS	FWS	SCT
22	SAURASHTRA & KUTCH	SCT	FWS	WS	WS	WS	FWS	SCT
23	KONKAN & GOA	WS	WS	WS	WS	WS	SCT	WS
24	MADHYA MAHARASHTRA	FWS	FWS	FWS	SCT	SCT	ISOL	ISOL
25	MARATHWADA	FWS	FWS	SCT	ISOL	ISOL	ISOL	ISOL
26	VIDARBHA	WS	WS	FWS	SCT	SCT	SCT	FWS
27	CHHATTISGARH	WS	FWS	SCT	SCT	SCT	FWS	FWS
28	COASTAL ANDHRA PRADESH	FWS	SCT	ISOL	ISOL	ISOL	SCT	FWS
29	TELANGANA	FWS	SCT	SCT	SCT	SCT	SCT	SCT
30	RAYALASEEMA	FWS	SCT	ISOL	ISOL	ISOL	ISOL	SCT
31	TAMILNADU & PUDUCHERRY	ISOL	ISOL	ISOL	ISOL	ISOL	ISOL	SCT
32	COSTAL KARNATAKA	WS	WS	WS	WS	FWS	SCT	SCT
33	NORTH INTERIOR KARNATAKA	FWS	SCT	SCT	SCT	SCT	ISOL	ISOL
34	SOUTH INTERIOR KARNATAKA	FWS	SCT	SCT	SCT	SCT	SCT	ISOL
35	KERALA AND MAHE	WS	WS	FWS	FWS	FWS	FWS	WS
36	LAKSHADWEEP	FWS	FWS	SCT	SCT	SCT	SCT	SCT

- As the lead period increases forecast accuracy decrease.





- Action may be taken based on ORANGE AND REDCOLOUR warnings.
- Vulnerable regions likely urban and hilly areas action may be initiated for heavy rainfall warning.
- As the lead period increases forecast accuracy decreases.

Detailed districtwise Multi Hazard weather warning for next five days available at
<https://mausam.imd.gov.in/responsive/districtWiseWarningGIS.php>

Weather forecast over Delhi/NCR during 03rd to 06th September 2025**Past Weather:**

There has been rise in the minimum temperature up to 1 - 2°C and fall in maximum temperature up to 1 - 2°C over Delhi/NCR during the past 24 hours. The maximum and minimum temperatures over Delhi were around 27 to 29°C and 22 to 24°C respectively. The minimum temperature was below normal up to 2 - 3°C and maximum temperature was below normal up to 4 - 7°C. Generally cloudy sky conditions with predominant surface wind from the east direction with wind speeds up to 16 kmph prevailed during the past 24 hours. Light to moderate rain/thundershowers at most places has been recorded in Delhi. Generally cloudy sky conditions with a wind speed of less than 08 kmph from the east direction prevailed over the region in the forenoon today.

Weather Forecast:

03.09.2025: Generally cloudy sky. One or two spells of very light to light rain/thundershowers like at many places with possibility of moderate rain at few places. The maximum temperatures over Delhi are likely to be in the range of 31 to 33°C. The maximum temperature will be below normal up to 1 to 3°C. The predominant surface wind will likely be from the southeast direction with a wind speed of up to 10-15 kmph during the afternoon hours. The wind speed will decrease becoming less than 10 kmph from the southeast direction during the evening and night.

04.09.2025: Generally cloudy sky. Possibility of one or two spells of very light to light rain/thundershowers. The maximum and minimum temperatures over Delhi are likely to be in the range of 32 to 34°C and 23 to 25°C respectively. The minimum temperature will be below normal up to 1 to 3°C and the maximum temperature will be below normal up to 1 to 2°C. The predominant surface wind will likely be from the southeast direction with a wind speed of up to 08 - 12 kmph during morning hours. The wind speed will gradually increase becoming less than 15 kmph from the northeast direction in the afternoon. The wind speed will decrease becoming less than 12 kmph from the northeast direction during the evening and night.

05.09.2025: Generally cloudy sky. One or two spells of very light to light rain/thundershowers like at many places with possibility of moderate rain at isolated places. The maximum and minimum temperatures over Delhi are likely to be in the range of 32 to 34°C and 23 to 25°C respectively. The minimum temperature will be below normal up to 1 to 3°C and the maximum temperature will be below normal up to 1 to 2°C. The predominant surface wind will likely be from the southeast direction with a wind speed of up to 15-20 kmph during morning hours. The wind speed will gradually increase becoming less than 25 kmph from the east direction in the afternoon. The wind speed will decrease becoming less than 18 kmph from the northeast direction during the evening and night.

06.09.2025: Generally cloudy sky. One or two spells of very light to light rain/thundershowers. The maximum and minimum temperatures over Delhi are likely to be in the range of 32 to 34°C and 22 to 24°C respectively. The minimum temperature will be below normal up to 1 to 2°C and the maximum temperature will be below normal up to 1 to 2°C. The predominant surface wind will likely be from the east direction with a wind speed of less than 20 kmph during the morning hours. The wind speed will gradually increase becoming less than 25 kmph from the southeast direction in the afternoon. The wind speed will decrease becoming less than 15 kmph from the northeast direction during the evening and night.

Impact expected and Action Suggested due to light to moderate rainfall with thundershowers:

- Damage to standing crops, Minor to major damage to power and communication lines due to breaking of branches, Partial damage to vulnerable structures due to strong winds, Loose objects may fly.
- People are advised to keep a watch on the weather for worsening conditions and be ready to move to safer places accordingly, stay indoors, close windows & doors and avoid travel if possible, take safe shelters; do not take shelter under trees, do not lie on concrete floors and do not lean against concrete walls, unplug electrical/electronic appliances, immediately get out of water bodies, keep away from all the objects that conduct electricity.

Impact & Action Suggested due to

- ❖ **Extremely heavy rainfall** at isolated places over Gujarat Region during 04th-06th; West Madhya Pradesh on 05th; Saurashtra & Kutch on 06th September.
- ❖ **Very heavy rainfall** over Jammu-Kashmir, Himachal Pradesh, Punjab, Haryana, Chandigarh, East Madhya Pradesh, Vidarbha, Chhattisgarh, Jharkhand, Odisha on 03rd; West Madhya Pradesh on 03rd & 04th; East Rajasthan during 03rd-05th; Konkan & Goa, Madhya Maharashtra during 04th-06th; Saurashtra & Kutch on 05th & 07th; West Rajasthan on 06th & 07th September.

Impact Expected

- Localized Flooding of roads, water logging in low lying areas and closure of underpasses mainly in urban areas of the above region.
- Occasional reduction in visibility due to heavy rainfall.
- Disruption of traffic in major cities due to water logging in roads leading to increased travel time.
- Minor damage to kutcha roads.
- Possibilities of damage to vulnerable structure.
- Localized Landslides/Mudslides/landslips/mudslips/landsinks/mudsinks.
- Damage to horticulture and standing crops in some areas due to inundation.
- It may lead to riverine flooding in some river catchments (for riverine flooding please visit Web page of CWC)

Action Suggested

- Check for traffic congestion on your route before leaving for your destination.
- Follow any traffic advisories that are issued in this regard.
- Avoid going to areas that face the water logging problems often.
- Avoid staying in vulnerable structure.

Flash flood guidance:

24 hours Outlook for the Flash Flood Risk (FFR) till 1130 IST of 04-09-2025 :

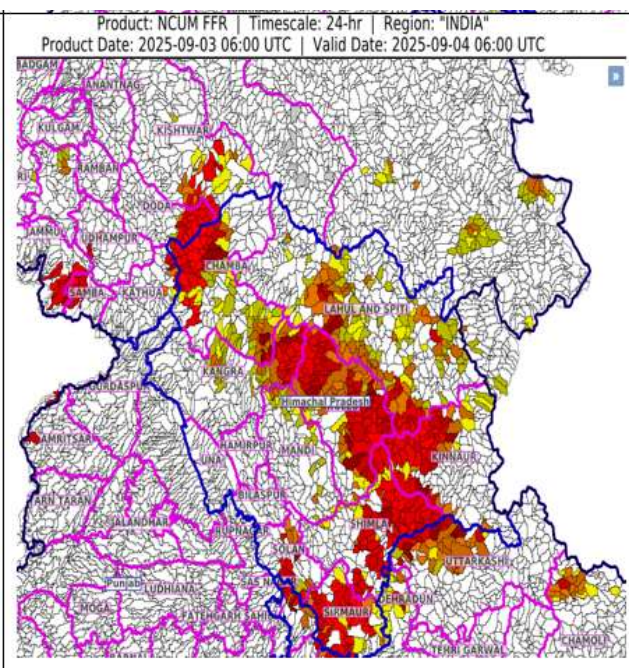
Low to Moderate flash flood risk likely over few watersheds & neighbourhoods of following Met Sub-divisions during next 24 hours.

Himachal Pradesh - Chamba, Kangra, Kinnaur, Kullu, Lahul&Spiti, Mandi, Shimla, Sirmaur and Solan districts.

Jammu & Kashmir & Ladakh - Doda, Jammu, Kathua, Kistwar, Riasi, Samba and Udhampur districts.

Uttarakhand - Chamoli, Dehradun and Uttarkashi districts.

Surface runoff/ Inundation may occur at some fully saturated soils & low-lying areas over Area of Concern (AoC) as shown in map due to expected rainfall occurrence in next 24 hours.



Legends & abbreviations:

- ❖ **Heavy Rain:**64.5-115.5mm; **Very Heavy Rain:**115.6-204.4mm; **Extremely Heavy Rain:** >204.4mm.
- ❖ **Obsy:** Observatory; Automatic Weather Station; **ARG:** Automatic Rain Gauge; **dist:** District; **NH:** National Highway; **KVK:** Krishi Vigyan Kendra; **DVC:** Damodar Valley Corporation; **PTO:** Part Time Office, **Aero:** Aerodrome, **IAF:** Indian Air Force.
- ❖ **Region wise classification of meteorological Sub-Divisions:**
 - **Northwest India:** Western Himalayan Region (Jammu-Kashmir-Ladakh-Gilgit-Baltistan-Muzaffarabad, Himachal Pradesh and Uttarakhand); Punjab, Haryana-Chandigarh-Delhi; West Uttar Pradesh, East Uttar Pradesh, West Rajasthan and East Rajasthan.
 - **Central India:** West Madhya Pradesh, East Madhya Pradesh, Vidarbha and Chhattisgarh.
 - **East India:** Bihar, Jharkhand, Sub-Himalayan West Bengal & Sikkim; Gangetic West Bengal, Odisha and Andaman & Nicobar Islands.
 - **Northeast India:** Arunachal Pradesh, Assam & Meghalaya and Nagaland, Manipur, Mizoram & Tripura.
 - **West India:** Gujarat Region, Saurashtra & Kutch, Konkan & Goa, Madhya Maharashtra and Marathawada.
 - **South India:** Coastal Andhra Pradesh & Yanam, Telangana, Rayalaseema, Coastal Karnataka, North Interior Karnataka, South Interior Karnataka, Kerala & Mahe, Tamil Nadu, Puducherry & Karaikal and Lakshadweep.

LEGENDS

1. अंडमान और निकोबार द्वीपसमूह

2. अरुणाचल प्रदेश

3. असम और मेघालय

4. नागालैंड, मणिपुर, मिजोरम और त्रिपुरा

5. उप-हिमालयी पश्चिम बंगाल और सिक्किम

6. गंगीय पश्चिम बंगाल

7. ओडिशा

8. झारखंड

9. बिहार

10. पूर्वी उत्तर प्रदेश

11. पश्चिम उत्तर प्रदेश

12. उत्तराखंड

13. हरियाणा, चंडीगढ़ और दिल्ली

14. पंजाब

15. हिमाचल प्रदेश

16. जम्मू और कश्मीर और लद्दाख

17. पश्चिम राजस्थान

18. पूर्वी राजस्थान

19. पश्चिम मध्य प्रदेश

20. पूर्वी मध्य प्रदेश

21. गुजरात

22. सौराष्ट्र

23. कोंकण और गोवा

24. मध्य महाराष्ट्र

25. मराठवाड़ा

26. विदर्भ

27. छत्तीसगढ़

28. तटीय आंध्र प्रदेश और यनम

29. तेलंगाना

30. रायलसीमा

31. तमिलनाडु, पुडुचेरी और कराईकल

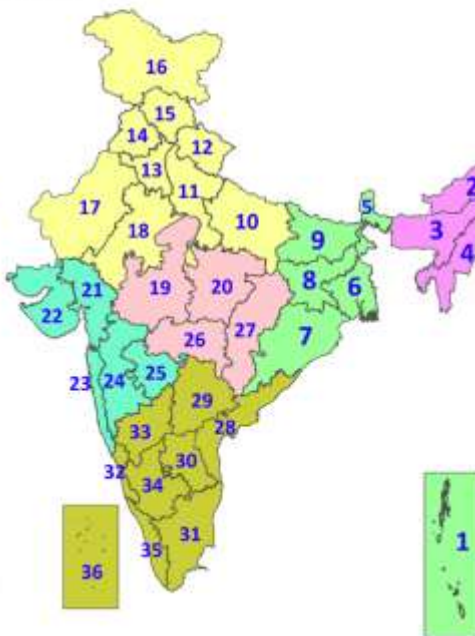
32. तटीय कर्नाटक

33. आंतरिक उत्तरी कर्नाटक

34. आंतरिक दक्षिणी कर्नाटक

35. केरल और माहे

36. लक्षद्वीप



1. Andaman & Nicobar Islands

2. Arunachal Pradesh

3. Assam & Meghalaya

4. Nagaland, Manipur, Mizoram & Tripura

5. Sub-Himalayan West Bengal & Sikkim

6. Gangetic West Bengal

7. Odisha

8. Jharkhand

9. Bihar

10. East Uttar Pradesh

11. West Uttar Pradesh

12. Uttarakhand

13. Haryana, Chandigarh & Delhi

14. Punjab

15. Himachal Pradesh

16. Jammu & Kashmir and Ladakh

17. West Rajasthan

18. East Rajasthan

19. West Madhya Pradesh

20. East Madhya Pradesh

21. Gujarat

22. Saurashtra

23. Konkan & Goa

24. Madhya Maharashtra

25. Marathwada

26. Vidarbha

27. Chhattisgarh

28. Coastal Andhra Pradesh & Yanam

29. Telangana

30. Rayalaseema

31. Tamilnadu, Puducherry & Karaikal

32. Coastal Karnataka

33. North Interior Karnataka

34. South Interior Karnataka

35. Kerala & Mahe

36. Lakshadweep

SPATIAL DISTRIBUTION (% of Stations reporting)

% Stations	Category	% Stations	Category
76-100	Widespread (WS/Most Places)	26-50	Scattered (SCT/A Few Places)
51-75	Fairly Widespread (FWS/Many Places)	1-25	Isolated (ISOL)



Fog



Heavy Snow



Cold Wave



Heavy Rain



Dust Storm



Cold Day



Very Heavy Rain



Heat Wave



Ground Frost



Extremely Heavy Rain



Warm Night



Thunder & Lightning



Hot Day



Hailstorm



Hot & Humid



Dust Raising Winds



Strong Surface Winds

COLOUR CODED WARNING

No Warning (No Action)

Watch (Be Aware)

Alert (Be Prepared To Take Action)

Warning (Take Action)

Probabilistic Forecast

Terms	Probability of Occurrence (%)
Unlikely	< 25
Likely	25 - 50
Very Likely	50 - 75
Most Likely	> 75

* Red colour warning does not mean "Red Alert", Red colour warning means "Take Action".

Forecast and Warning for any day is valid from 0830 hours IST of day till 0830 hours IST of next day.

For more details, kindly visit <https://mausam.imd.gov.in> or contact: 011-2434-4599

(Service to the Nation since 1875)

DEFINITION/CRITERIA

Rain/ Snow *

Heavy: 64.5 to 115.5 mm/cm *
Very Heavy: 115.6 to 204.4 mm/cm *
Extremely Heavy: > 204.4 mm/cm *

Heat Wave

When maximum temperature of a station reaches $\geq 40^{\circ}\text{C}$ for plains and $\geq 30^{\circ}\text{C}$ for hilly regions
(a) Based on Departure from normal

Heat Wave: Maximum Temperature Departure from normal 4.5°C to 6.4°C .

Severe Heat Wave: Maximum Temperature Departure from normal $\geq 6.5^{\circ}\text{C}$

(b). Based on Actual maximum temperature

Heat Wave: When actual maximum temperature $\geq 45^{\circ}\text{C}$.

Severe Heat Wave: When actual maximum temperature $\geq 47^{\circ}\text{C}$.

(c). Criteria for heat wave for coastal stations

When maximum temperature departure is $> 4.5^{\circ}\text{C}$ from normal. Heat Wave may be described provided maximum temperature $\geq 37^{\circ}\text{C}$.

Warm Night

When maximum temperature remains 40°C

Warm Night: When minimum temperature departure 4.5°C to 6.4°C .

Severe Warm Night: When minimum temperature departure $> 6.4^{\circ}\text{C}$.

Cold Wave

When minimum temperature of a station $\leq 10^{\circ}\text{C}$ for plains and $\leq 0^{\circ}\text{C}$ for hilly regions.

(a). Based on departure

Cold Wave: Minimum Temperature Departure from normal -4.5°C to -6.4°C .

Severe Cold Wave: Minimum Temperature Departure from normal $\leq -6.5^{\circ}\text{C}$

(b) Based on actual Minimum Temperature (for Plains only)

Cold Wave: When Minimum Temperature is $\leq 4.0^{\circ}\text{C}$

Severe Cold Wave: When Minimum Temperature is $\leq 2.0^{\circ}\text{C}$

(c) For Coastal Stations

When Minimum Temperature departure is $\leq -4.5^{\circ}\text{C}$ & actual Minimum Temperature is $\leq 15^{\circ}\text{C}$

Cold Day

When minimum temperature of a station $\leq 10^{\circ}\text{C}$ for plains and $\leq 0^{\circ}\text{C}$ for hilly regions

Based on departure

Cold Day: Maximum Temperature Departure from normal -4.5°C to -6.4°C .

Severe Cold Day: Maximum Temperature Departure from normal $\leq -6.5^{\circ}\text{C}$

Fog

Phenomenon of small droplets suspended in air and the horizontal visibility $< 1\text{km}$

Moderate Fog: When the visibility between 500-200 metres

Dense Fog: when the visibility between 50- 200 metres

Very Dense Fog: when the visibility < 50 metres

Thunderstorm

Sudden electrical discharges manifested by a flash of light (Lightning) and a sharp rumbling sound (thunder)

Dust/Sand Storm

An ensemble of particles of dust or sand energetically lifted to great heights by a strong and turbulent wind.

Frost

Ice deposits on ground

Air temperature $\leq 4^{\circ}\text{C}$ (over Plains)

Squall

A strong wind that rises suddenly, lasts for atleast 1 minute.

Moderate: Wind speed 52-61 kmph

Severe: Wind speed 62-67 kmph

Very Severe: Wind speed > 67 kmph

Sea State

Effect of various waves in the sea over specific area

Rough to very rough: Wind speed 41-62 kmph (22-33 knots) & Wave height 2.5-6 metre

High to very high: Wind speed 63-117 kmph (34-63 knots) & Wave height 6-14 metre

Phenomenal: Wind speed > 117 kmph (> 63 knots) & Wave height > 14 metre

Cyclone

Cyclonic Storm: Wind speed 62-67 kmph (34-47 knots)

Severe Cyclonic Storm: Wind speed 88-117 kmph (48-63 knots)

Very Severe Cyclonic Storm: Wind speed 118-165 kmph (64 - 89 knots)

Extremely Severe Cyclonic Storm: Wind speed 166-220 kmph (90 -119 knots)

Super Cyclone Storm: Wind speed > 220 kmph (> 119 knots)

* Red colour warning does not mean "Red Alert", Red colour warning means "Take Action".

Forecast and Warning for any day is valid from 0830 hours IST of day till 0830 hours IST of next day.

For more details, kindly visit <https://mausam.imd.gov.in> or contact: 011-2434-4599

(Service to the Nation since 1875)

Hot and Humid: When maximum temperatures remain 3°C above normal along with the above normal relative humidity.